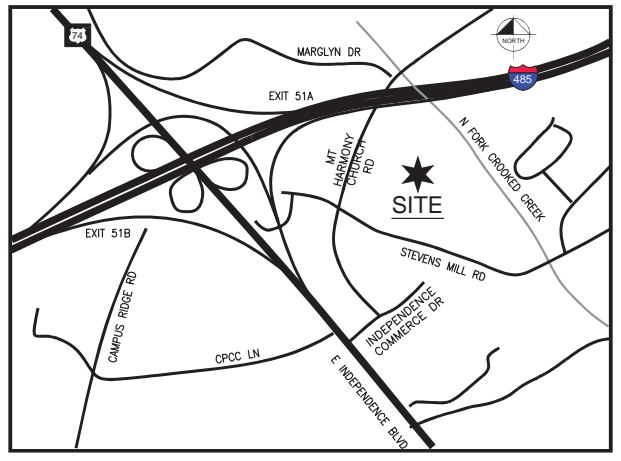
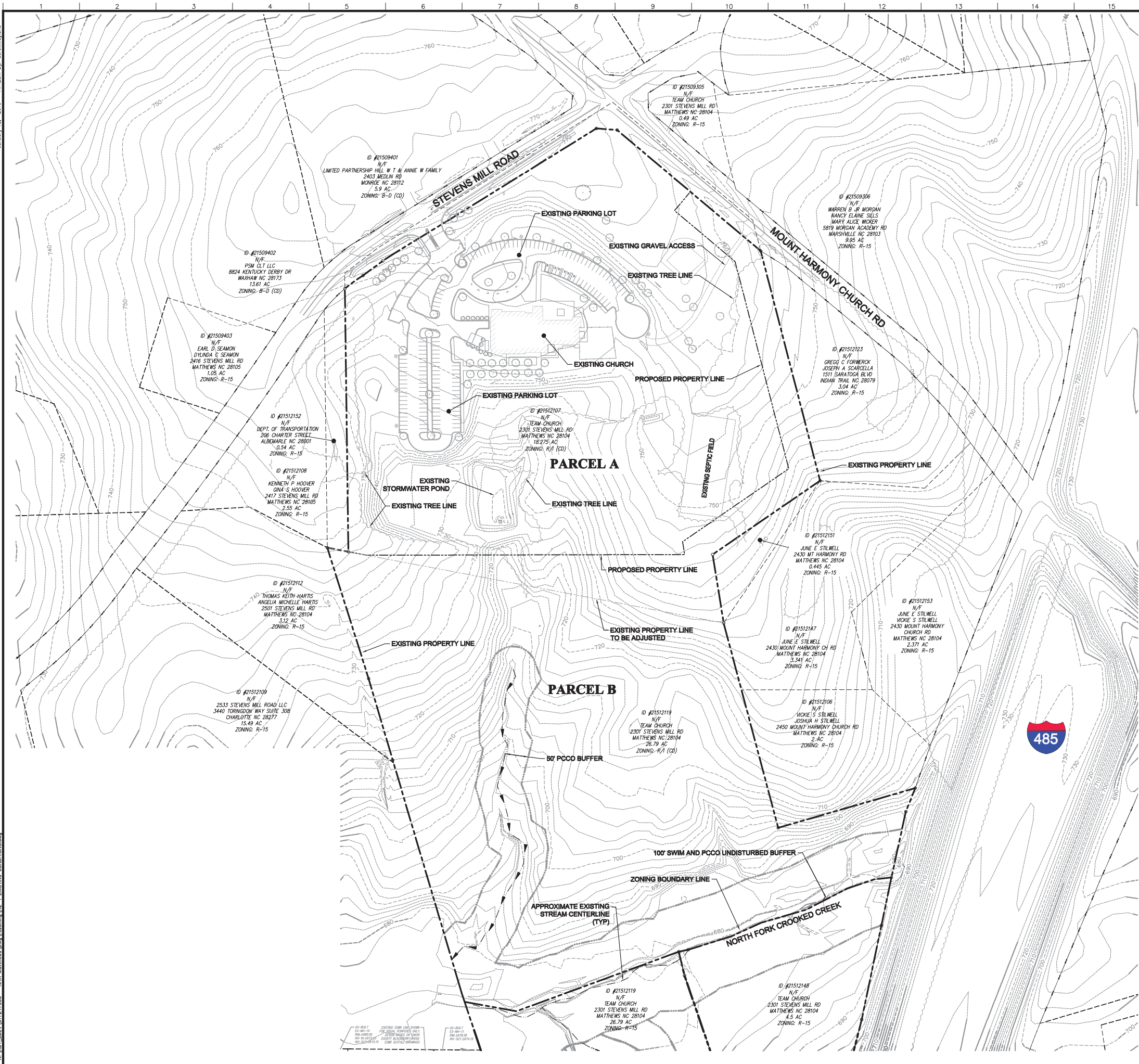


January 18, 2016 - 11:12am By: derek.walton

K:\NOT_LIB\A\01727000 - MHA_Matthews\Draw\Vegeting\KZ-1_EXISTING_CONDITIONS.dwg



SURVEY NOTE

1. EXISTING CONTOURS, BUILDINGS AND PARKING TAKEN FROM A SURVEY PROVIDED BY JAMES MAUNEY & ASSOCIATES P.A., 6405 WILKINSON BLVD., SUITE 11, BELMONT, NC 28012, DATED 11/24/2015.

Kimley»Horn
NC LICENSE #F-0102
200 SOUTH TRYON
SUITE 200, CHARLOTTE,
NORTH CAROLINA 28202
PHONE: (704) 333-5131
© 2016

NORTH CAROLINA
PROFESSIONAL
SEAL
042797
ENGINEER
KEVIN S. PULLIS
Feb 2 2016 2:55 PM

NO.	DATE	REVISIONS
1	1/14/16	REVISED PER CITY COMMENTS

National Heritage Academies
3850 BROADMOOR AVENUE SE
SUITE 201
GRAND RAPIDS, MI 49512

MATTHEWS CHARTER SCHOOL
2301 STEVENS MILL ROAD
MATTHEWS, NC 28104

EXISTING CONDITIONS AND VEGETATION PLAN

DESIGNED BY: PAB
DRAWN BY: DAW
CHECKED BY: KP/EH
DATE: 01-18-2016
PROJECT#: 017247000
RZ-1

